



. FAMILY OWNED .  
**ORB**  
· OLD RANCH BRANDS EST. 1965

# FIND YOUR REGIONAL SALES REPRESENTATIVE

## NEW ENGLAND / MID-ATLANTIC

Maine, New Hampshire, Connecticut, Rhode Island, Vermont, Massachusetts, New Jersey, Pennsylvania, New York, Maryland, Delaware

**Lisa Lombardi Keeley**  
PO BOX 248  
Perkinsville, VT 05151  
Cell: (203) 215-0485  
E-mail: lisakeeley.lk@gmail.com

**Michael Keeley**  
Cell: (802) 299-6622  
E-mail: michaeljkeeley73@gmail.com

## SOUTHEAST / MID-ATLANTIC

Alabama, Georgia, Florida, North & South Carolina, West Virginia, Tennessee, Virginia

**Paul Jones**  
701 41st Ave.  
South North Myrtle Beach, SC 29582  
Phone: (843) 457-7819  
Email: pauljone@earthlink.net

## MIDWEST - EAST

Indiana, Kentucky, Michigan, Ohio

### Palisade Trading

**Crystal Neely**  
618 Lone Oak Lane  
Verona, WI 53593  
Cell: (715) 410-7412  
E-mail: crystal@palisadetrading.com

**Ben Boynton**  
1176 Tenagra Way  
Columbus, OH 43228  
Cell: (909) 942-1729  
E-mail: ben@palisadetrading.com  
ben.a.boynton@gmail.com

## MIDWEST - WEST

North & South Dakota, Minnesota, Nebraska, Kansas, Missouri, Wisconsin, Illinois, Iowa, Upper Peninsula of Michigan

### Whitefish Trading Company

**Bernie Reisberg**  
2104 Kenwood Parkway  
Minneapolis, MN 55405  
Cell: (612) 281-6427  
E-mail: bernie@whitefishtrading.co

**Michelle Reisberg**  
Cell: (763) 670-0272  
E-mail: michelle@whitefishtrading.co

## PACIFIC NORTHWEST / HEARTLAND

Washington, Oregon, Idaho, Montana, Alaska  
Arkansas, Louisiana, Mississippi, Oklahoma, Texas

**Alan Quinn**  
2554 NW Marshall St., Unit A  
Portland, OR 97210  
Cell: (503) 250-2680  
E-mail: alancquinn@aol.com

**Sigrid Quinn**  
Cell: (206) 200-7578  
E-mail: sigridquinn66@gmail.com

## ROCKY MOUNTAIN

Colorado, Utah, Wyoming, New Mexico, and W. Nebraska

**Taylor Oliver**  
10129 Grove Court unit C  
Westminster CO 80031  
Cell: 303-507-1499  
Email: tayloroliverco@gmail.com

## WEST COAST / SOUTHWEST

Arizona, California, Nevada, Hawaii

**Paige Ricciardi**  
3650 Lazarro Dr.  
Carmel, CA 93923  
Phone: (831) 238-2746  
E-mail: paigekitson@yahoo.com

## CANADA REPS

### EASTERN CANADA

**Sally Adams**  
160 Tycos Dr., Suite 114  
Toronto, Ontario, M6B 1W8  
Phone: (416) 998-4729  
Fax: (866) 568-5950  
E-mail: sallyadamsagency@gmail.com

### WESTERN CANADA

#### Blu I'd Sales by Victoria Inc.

**Victoria Murray**  
#231 - 1951 Glen Drive  
Vancouver, BC V6A 4J6  
Office: (604) 682-3826 | Cell: (604) 341-5450  
E-mail: victoria@bluidsales.com

. FAMILY OWNED .



## CORPORATE OFFICE

Sportif USA  
1415 Greg St., Suite 101 · Sparks, NV 89431  
Phone: 1-800-776-7843 · Fax: (775) 356-3567  
E-mail: whsl@sportif.com

## CANADA DISTRIBUTION

Sportables Fine Goods Limited  
75 Shields Ct., Unit 2 · Markham, Ontario · Canada, L3R 9T4  
Phone: 1-800-563-2746 Fax: (905) 305-1639  
E-mail: info@sportables.ca

## VISIT US AT [WWW.OLDRANCHB2B.COM](http://WWW.OLDRANCHB2B.COM)

- Easy online ordering
- Check on the status of an order
- Browse products by season
- Get regular updates on inventory
- Shop closeouts
- Download our workbook



This workbook is printed with soy-based inks on 10% post-consumer waste paper certified by the Forest Stewardship Council to come from well-managed forests.

# TABLE OF CONTENTS

DELIVERY ONE 4

---

DELIVERY TWO 20

---

WOMEN'S INDEX 35

---

MORE THAN A LABEL 39

---

TERMS & CONDITIONS 41

---





HIGH PRAIRIE DRESS - LIGHT BLUE Pg. 24



HONEY GROVE TANK - PINK Pg. 10



PIPPIN TOP - NATURAL Pg. 6



TARRA SHORT - ENSIGN BLUE Pg. 17



PLUMAS PRINT SHIRT - NATURAL Pg. 24 | TARRA SHORT - BLUSH TANK Pg. 17

WOMEN'S

DELIVERY ONE - AVAILABLE 02/01/2027



PLUMAS SHIRT - PINK Pg. 7 | HONEY GROVE TANK - PINK Pg. 10



PLUMAS SHIRT - POTTERS CLAY Pg. 7 | TARRA WIDE LEG PANT - BLUSH TAN Pg. 14



ANNA TOP - POTTERS CLAY Pg. 6 | TARRA WIDE LEG PANT - WHITE Pg. 14



HONEY GROVE TOP - YELLOW Pg. 8 | TARRA WIDE LEG PANT - WHITE Pg. 14

# PIPPIN TOP

WHOLESALE \$29.50 | SUGGESTED RETAIL \$59.00



JD77-Honey Mustard

**STYLE#: J30652**

### DESCRIPTION & FEATURES

- Pintuck details at neckline • Full button front placket • Cap sleeves with ruching along shoulder

### SIZE SCALE

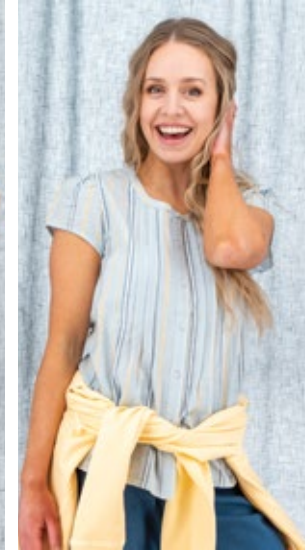
XS	S	M	L	XL	XXL
----	---	---	---	----	-----

### PRODUCT CONTENT

100% organic cotton, all over print, yarn-dyed stripes



JA80-Natural



KH61-Blue Skies



KH44-Potter's Clay



WHOLESALE \$32.50 | SUGGESTED RETAIL \$65.00

# ANNA TOP



YZ44-Potter's Clay



YZ51-Blue



JD77-Honey Mustard

**STYLE#: J28752**

### DESCRIPTION & FEATURES

- Y-neck full button front placket • Smocked cuffs

### SIZE SCALE

XS	S	M	L	XL	XXL
----	---	---	---	----	-----

### PRODUCT CONTENT

100% organic cotton, all over printed double gauze



JY97-Spring Garden

# PLUMAS SHIRT

WHOLESALE \$29.50 | SUGGESTED RETAIL \$59.00



**STYLE#: J33952**

## DESCRIPTION & FEATURES

- Best Selling Style! • Y-neck full button front placket • Convertible long sleeves with roll-tab • Inverted pleat on back yoke

## SIZE SCALE

XS	S	M	L	XL	XXL
----	---	---	---	----	-----

## PRODUCT CONTENT

100% organic cotton, yarn-dyed stripes & doobby



KH61-Blue Skies



KH44-Potter's Clay



KB03-White



KJ55-Pink



KJ38-Dark Blue



JS25-Purple

# HONEY GROVE TOP

WHOLESALE \$29.50 | SUGGESTED RETAIL \$59.00



**STYLE#: J32492**

## DESCRIPTION & FEATURES

- Full button front placket • Short sleeves with ruching along shoulder • Smocking at sleeve cuffs to create ruffle edge

## SIZE SCALE

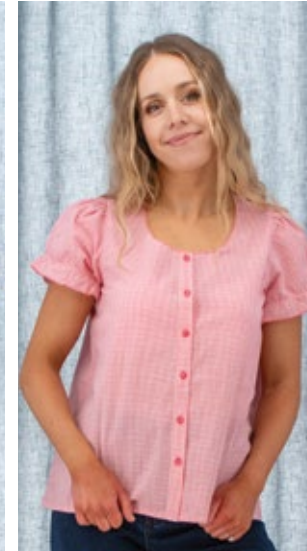
XS	S	M	L	XL	XXL
----	---	---	---	----	-----

## PRODUCT CONTENT

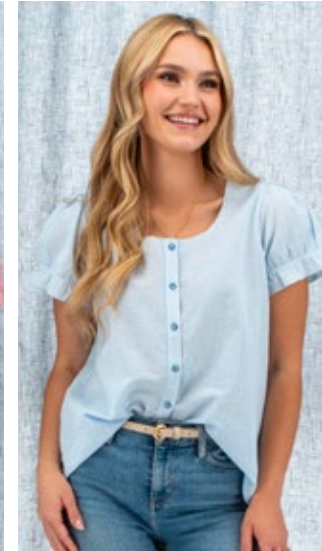
70% organic cotton 30% linen, yarn-dyed gingham



JU54-Yellow



JU55-Pink



JU05-Light Blue



WHOLESALE \$29.50 | SUGGESTED RETAIL \$59.00

# PETAL CREEK TOP



KB05-Light Blue



KB81-Deep Coral



KB54-Yellow

**STYLE#: J32452**

## DESCRIPTION & FEATURES

- Full button front placket • Short sleeves with ruching along shoulder • Smocking at sleeve cuffs to create ruffle edge

## SIZE SCALE

XS	S	M	L	XL	XXL
----	---	---	---	----	-----

## PRODUCT CONTENT

100% organic cotton, yarn-dyed shadow stripe



KB03-White

# PETAL CREEK TANK TOP

WHOLESALE \$24.50 | SUGGESTED RETAIL \$49.00



**STYLE#:** J31952

## DESCRIPTION & FEATURES

- Ladder lace detail along neckline
- 6 button kissing placket
- Wide bra friendly straps

## SIZE SCALE

XS	S	M	L	XL	XXL
----	---	---	---	----	-----

## PRODUCT CONTENT

100% organic cotton, yarn-dyed shadow stripe, all over print



KB05-Light Blue



KB81-Deep Coral



KB03-White



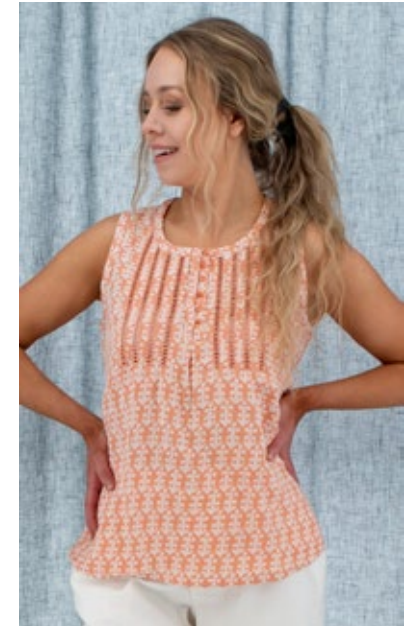
KB54-Yellow



JY97-Spring Garden



YZ51-Blue



YZ44-Potter's Clay

# HONEY GROVE TANK TOP

WHOLESALE \$24.50 | SUGGESTED RETAIL \$49.00



**STYLE#:** J31992

## DESCRIPTION & FEATURES

- Ladder lace detail along neckline
- 6 button kissing placket
- Wide bra friendly straps

## SIZE SCALE

XS	S	M	L	XL	XXL
----	---	---	---	----	-----

## PRODUCT CONTENT

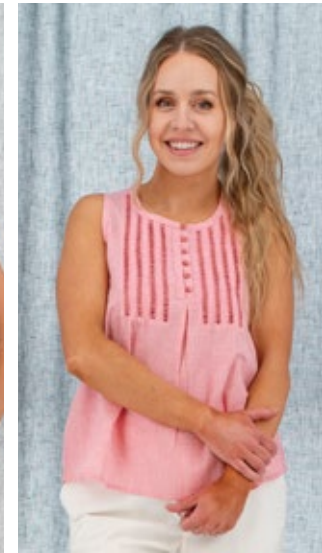
70% organic cotton 30% linen, yarn-dyed gingham



JU54-Yellow



JU05-Light Blue



JU55-Pink



WHOLESALE \$22.50 | SUGGESTED RETAIL \$45.00

# INOLA SHORT



**STYLE#:** K159128

## DESCRIPTION & FEATURES

- 3.5" inseam
- French terry knit
- Pull-on short with waist tie
- Hip pockets

## SIZE SCALE

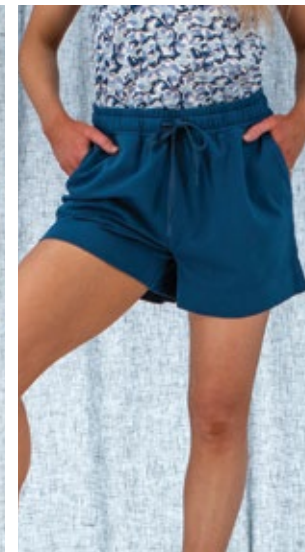
XS	S	M	L	XL	XXL
----	---	---	---	----	-----

## PRODUCT CONTENT

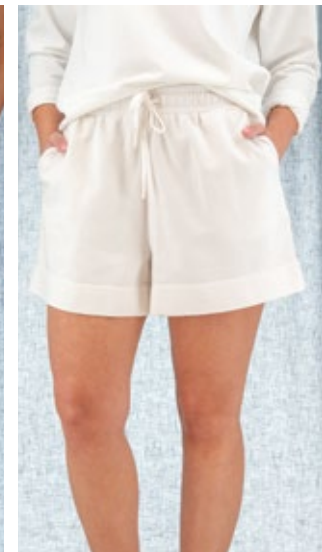
100% organic cotton, garment dyed, heavy garment wash



726-Mushroom



753-Ensign Blue



03-White

# INOLA SWEATSHIRT

SOLID: WHOLESALE \$29.50 | SUGGESTED RETAIL \$59.00 | PRINT: WHOLESALE \$29.50 | SUGGESTED RETAIL \$59.00



Solid STYLE#: M233128

Print STYLE#: M233128P

## DESCRIPTION & FEATURES

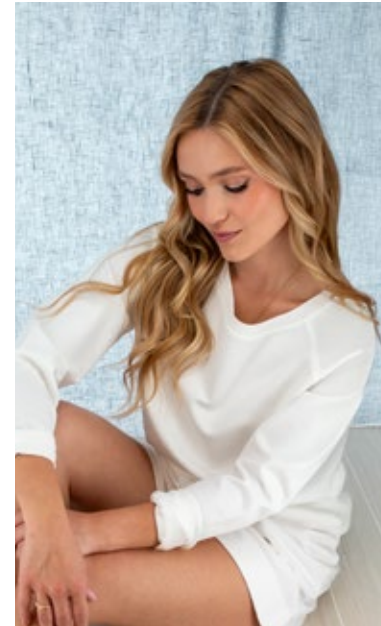
- French terry knit • Raglan sleeves • Wide neck
- Rib knit trim at neck, cuffs, & sweep • Solid & printed

## SIZE SCALE

XS	S	M	L	XL	XXL
----	---	---	---	----	-----

## PRODUCT CONTENT

100% organic cotton, garment dyed (solid), all over print, heavy garment wash



03-White



753-Ensign Blue



129-Rapture Rose



KM55-Pink



KM80-Natural



KM51-Blue

# INOLA PULLOVER HENLEY

WHOLESALE \$27.50 | SUGGESTED RETAIL \$55.00



648-Mountain Spring

**STYLE#: M275128**

## DESCRIPTION & FEATURES

• French terry knit • 6 ring snap henley • Drop shoulder

## SIZE SCALE

XS	S	M	L	XL	XXL
----	---	---	---	----	-----

## PRODUCT CONTENT

100% organic cotton, garment dyed, heavy garment wash



726-Mushroom



03-White



1137-Anise Flower



WHOLESALE \$29.50 | SUGGESTED RETAIL \$59.00

# INOLA PANT



**STYLE#: L262128**

## DESCRIPTION & FEATURES

• 30.5" inseam • French terry knit • Pull-on pant with waist tie • Hip pockets • 11" wide leg opening

## SIZE SCALE

XS	S	M	L	XL	XXL
----	---	---	---	----	-----

## PRODUCT CONTENT

100% organic cotton, garment dyed, heavy garment wash



726-Mushroom



03-White



753-Ensign Blue

# INOLA HOODIE

WHOLESALE \$37.50 | SUGGESTED RETAIL \$75.00



**STYLE#: M232128**

## DESCRIPTION & FEATURES

• French terry knit • Twill tape zipper pull • Raglan sleeves • Front & back princess seams • Integrated pockets on front princess seams • Rib knit trim at cuffs & hem

## SIZE SCALE

XS	S	M	L	XL	XXL
----	---	---	---	----	-----

## PRODUCT CONTENT

100% organic cotton, garment dyed, heavy garment wash



129-Rapture Rose



03-White



726-Mushroom



262-Italian Straw



753-Ensign Blue



625-Purple Impression

# INOLA DRESS

WHOLESALE \$34.50 | SUGGESTED RETAIL \$69.00



753-Ensign Blue

**STYLE#: P903128**

## DESCRIPTION & FEATURES

- 37" length • French terry knit • Dolman sleeves
- Scoop neck • Adjustable waist with tie • Hip pockets • Shirt tail hemline

## SIZE SCALE

XS	S	M	L	XL	XXL
----	---	---	---	----	-----

## PRODUCT CONTENT

100% organic cotton, garment dyed, heavy garment wash



03-White



726-Mushroom



WHOLESALE \$39.50 | SUGGESTED RETAIL \$79.00

# TARRA WIDE LEG PANT



753-Ensign Blue



954 Blush Tan

**STYLE#: L266444**

## DESCRIPTION & FEATURES

- 27.5" inseam • 7 belt loops • Hip pockets • Drop in back pockets • 10" wide leg opening

## SIZE SCALE

0	2	4	6	8	10	12	14	16
---	---	---	---	---	----	----	----	----

## PRODUCT CONTENT

97% organic cotton 3% Lycra® spandex, stretch twill weave



03-White

# MAGNOLIA 3/4 SLEEVE

SOLID: WHOLESALE \$19.50 | SUGGESTED RETAIL \$39.00 | PRINT: WHOLESALE \$19.50 | SUGGESTED RETAIL \$39.00



Solid STYLE#: M23895

Print/Stripe STYLE#: M23895P

## DESCRIPTION & FEATURES

• Deep scoop neck • 3/4 length sleeve • Shirt tail hemline • Solid, all over print & yarn-dyed stripe

## SIZE SCALE

XS	S	M	L	XL	XXL
----	---	---	---	----	-----

## PRODUCT CONTENT

95% organic cotton 5% spandex, jersey knit



FM97-Spring Garden



JB51-Blue



448-Estate Blue



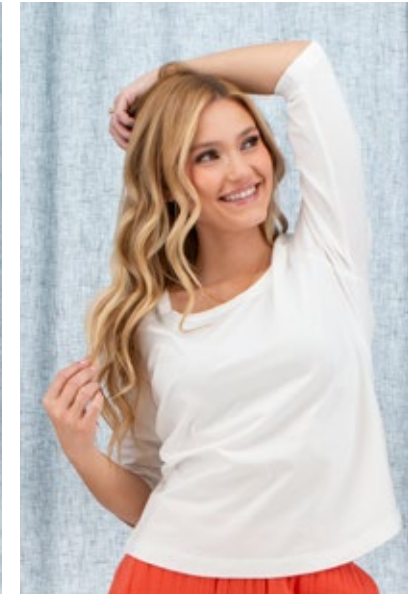
218-Ochre



614-Golden Cypress



330-Strawberry Pink



03-White

# BASIS TEE

SOLID: WHOLESALE \$18.50 | SUGGESTED RETAIL \$37.00 | PRINT: WHOLESALE \$18.50 | SUGGESTED RETAIL \$37.00



**Solid STYLE#:** M25495

**Print STYLE#:** M25495P

## DESCRIPTION & FEATURES

• Crew neck T-shirt • Double trim neckline • Solid and all over print

## SIZE SCALE

XS	S	M	L	XL	XXL
----	---	---	---	----	-----

## PRODUCT CONTENT

95% organic cotton 5% spandex, jersey knit



03-White



218-Ochre



614-Golden Cypress



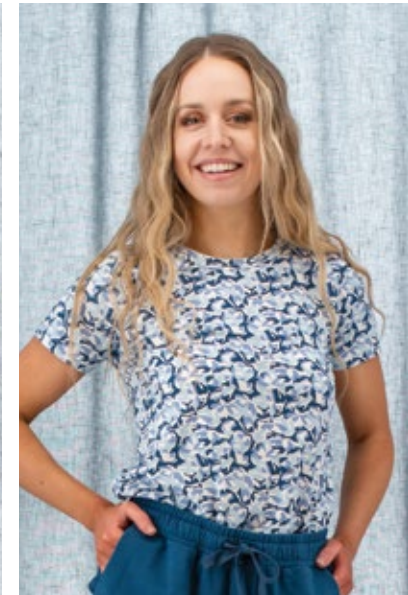
330-Strawberry Pink



448-Estate Blue



FM97-Spring Garden



JB51-Blue

# TARRA SHORT

WHOLESALE \$32.50 | SUGGESTED RETAIL \$65.00



753-Ensign Blue

**STYLE#: K153444**

### DESCRIPTION & FEATURES

- 7.5" inseam unrolled • 5.5" inseam rolled
- Roll-tab cuffs • Hip pockets • Back pockets with secure pocket flaps • 5 belt loops • Twill tape detailing

### SIZE SCALE

0	2	4	6	8	10	12	14	16
---	---	---	---	---	----	----	----	----

### PRODUCT CONTENT

97% organic cotton 3% Lycra® spandex, stretch twill weave



03-White



954 Blush Tan



WHOLESALE \$32.50 | SUGGESTED RETAIL \$65.00

# DAYSTAR DRESS



IW22-Gold



IW38-Dark Blue

**STYLE#: P86895**

### DESCRIPTION & FEATURES

- 37" length • V-neck • Cap sleeves • Ruching at bodice • Hip pockets

### SIZE SCALE

XS	S	M	L	XL	XXL
----	---	---	---	----	-----

### PRODUCT CONTENT

95% organic cotton 5% spandex, jersey knit, all over print



# WAYFARER DRESS

WHOLESALE \$39.50 | SUGGESTED RETAIL \$79.00



**STYLE#: P89652**

## DESCRIPTION & FEATURES

- 38" length • 4 button kissing placket • Pintucks along neckline • Inverted pleat below placket
- Horizontal stripe at sweep band • Hip pockets

## SIZE SCALE

XS	S	M	L	XL	XXL
----	---	---	---	----	-----

## PRODUCT CONTENT

100% organic cotton, yarn-dyed stripe doobby



JR38-Dark Blue



JR30-Rose



HONEY GROVE TOP - YELLOW PG. 8 | TARRA WIDE LEG PANT - WHITE PG. 14



ANNA TOP - SPRING GARDEN PG. 6 | TARRA WIDE LEG PANT - ENSIGN BLUE PG. 14



PIPPIN TOP - BLUE SKIES PG. 6 | TARRA SHORT - WHITE PG. 17



ANNA TOP - POTTER'S CLAY PG. 6 | TARRA WIDE LEG PANT - WHITE PG. 14



INOLA SWEATSHIRT - NATURAL PG. 11 | LAUREL TOP - ITALIAN STRAW PG. 28



LAUREL TOP - ITALIAN STRAW PG. 28



NADYA TANK TOP - GREEN PG. 23



CALYPSO WRAP - STRAWBERRY PINK PG. 32 | PETAL CREEK TANK - SPRING GARDEN PG. 9



ESTIE TOP - PURPLE IMPRESSION PG. 25



MOSS ROSE TOP - MOUNTAIN VIEW PG. 29 | TARRA WIDE LEG PANT - WHITE PG. 14



NADYA TANK TOP - OLIVE PG. 23



WILDFLOWER SKIRT - BLUE PG. 31 | INOLA SWEATSHIRT - WHITE PG. 11



LAYLA TOP - MOUNTAIN SPRING PG. 26



CLOVER FIELD TOP - IRIS PG. 22 | TARRA SHORT - ENSIGN BLUE PG. 17



CALYPSO WRAP - MUSHROOM STRIPE PG. 32 | CALYPSO TEE - STRAWBERRY PINK PG. 31

WOMEN'S

DELIVERY TWO - AVAILABLE 03/01/2027

# CLOVER FIELD TOP

WHOLESALE \$27.50 | SUGGESTED RETAIL \$55.00



JW37-Lilac

**STYLE#: J33652**

## DESCRIPTION & FEATURES

- Slight ruching along shoulder seam • Dolman sleeves • Box pleat on yoke seam • Secure rolled sleeves at cuffs

## SIZE SCALE

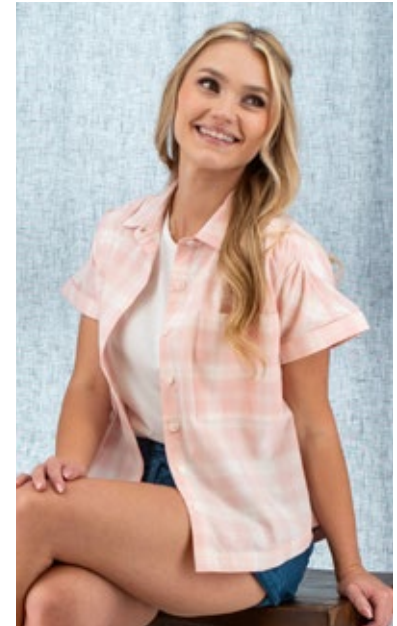
XS	S	M	L	XL	XXL
----	---	---	---	----	-----

## PRODUCT CONTENT

100% organic cotton, yarn-dyed seersucker stripe, yarn-dyed plaid



JW54-Yellow



JW72-Peach



KL35-Iris



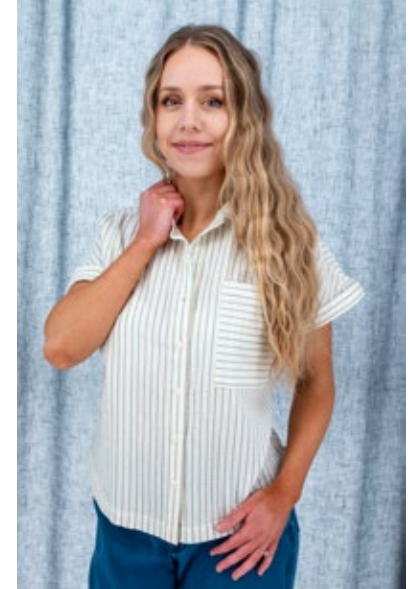
KL22-Gold



KL07-Green



KF30-Rose



KF61-Blue Skies

# NADYA TANK TOP

WHOLESALE \$24.50 | SUGGESTED RETAIL \$49.00



JS25-Purple

**STYLE#: J34652**

## DESCRIPTION & FEATURES

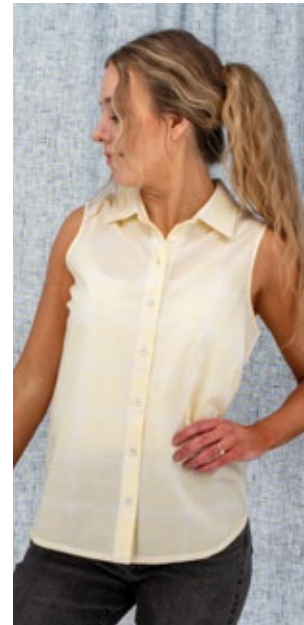
- Full button front placket • Wide bra friendly straps
- Bust darts

## SIZE SCALE

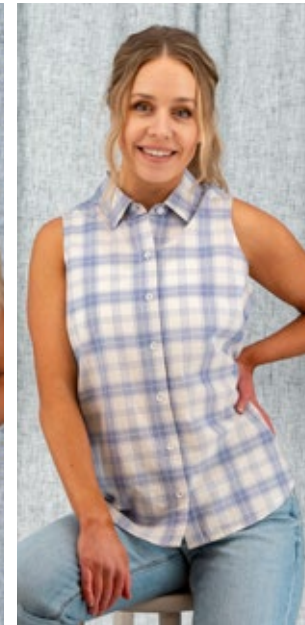
XS	S	M	L	XL	XXL
----	---	---	---	----	-----

## PRODUCT CONTENT

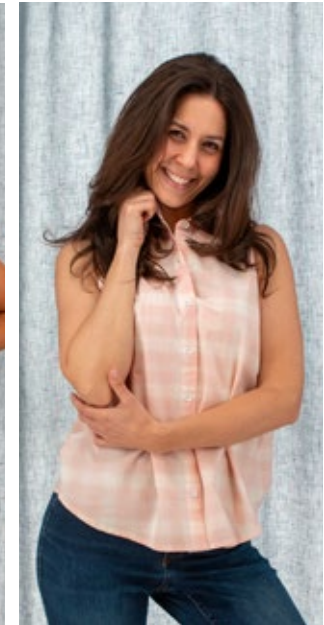
100% organic cotton, yarn-dyed stripe & plaid, all over print



JW54-Yellow



JW37-Lilac



JW72-Peach



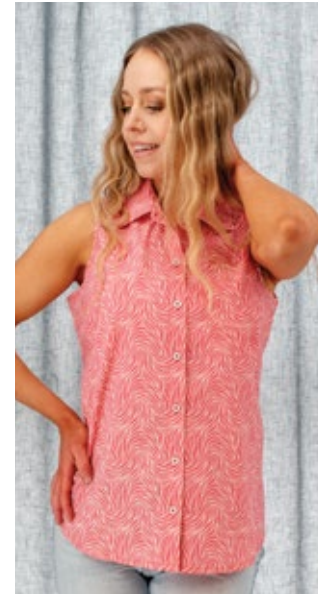
KL22-Gold



KL07-Green



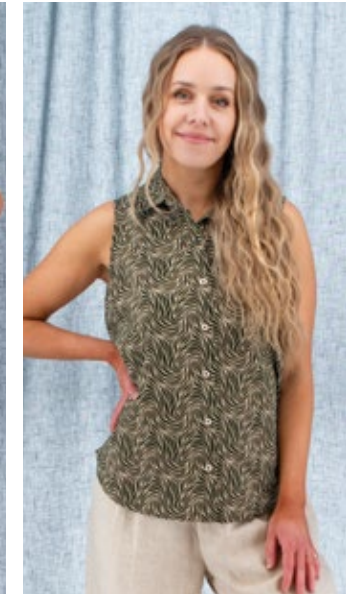
KL35-Iris



IY30-Rose



IY05-Light Blue



IY49-Olive

# PLUMAS PRINT SHIRT

WHOLESALE \$29.50 | SUGGESTED RETAIL \$59.00



IZ05-Light Blue

**STYLE#: J33952P**

## DESCRIPTION & FEATURES

- Best Selling Style! • Y-neck full button front placket • Convertible long sleeves with roll-tab • Inverted pleat on back yoke

## SIZE SCALE

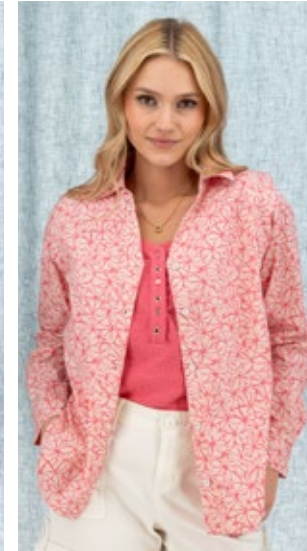
XS	S	M	L	XL	XXL
----	---	---	---	----	-----

## PRODUCT CONTENT

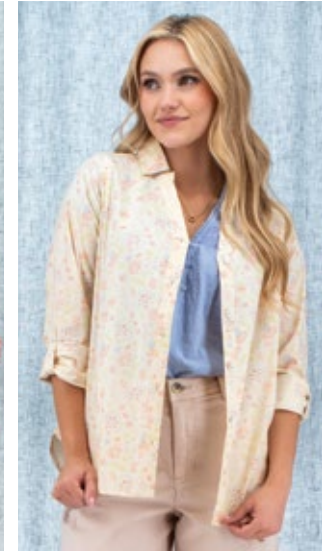
100% organic cotton, all over print



IZ49-Olive



IZ30-Rose



JA80-Natural



WHOLESALE \$37.50 | SUGGESTED RETAIL \$75.00

# HIGH PRAIRIE DRESS



IZ30-Rose



IZ49-Olive



IZ05-Light Blue

**STYLE#: P88552**

## DESCRIPTION & FEATURES

- 38.5" length • V-neck • 2-tiered skirt • Wide bra friendly straps • Mixed patterns

## SIZE SCALE

XS	S	M	L	XL	XXL
----	---	---	---	----	-----

## PRODUCT CONTENT

100% organic cotton, all over print





625-Purple Impression

**STYLE#: M19664**

**DESCRIPTION & FEATURES**

- 4 button henley • 3/4 sleeve with elastic cuffs

**SIZE SCALE**

XS	S	M	L	XL	XXL
----	---	---	---	----	-----

**PRODUCT CONTENT**

100% organic cotton, slub knit, garment dyed



262-Italian Straw



266-Muted Clay



753-Ensign Blue



03-White



733-Myrtle



648-Mountain Spring

# LAYLA SHORT SLEEVE TOP

WHOLESALE \$18.50 | SUGGESTED RETAIL \$37.00



**STYLE#: M17464**

## DESCRIPTION & FEATURES

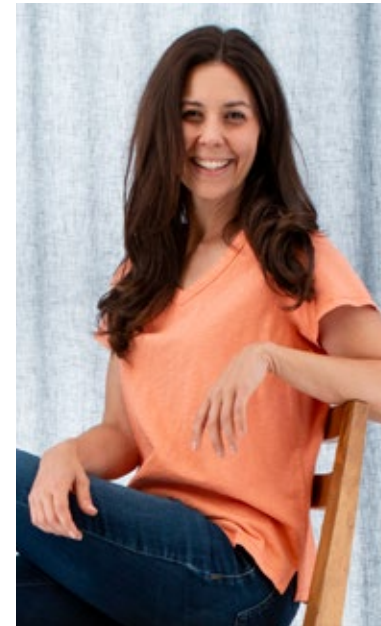
- V-neck • Embroidered woven trim at neckline

## SIZE SCALE

XS	S	M	L	XL	XXL
----	---	---	---	----	-----

## PRODUCT CONTENT

100% organic cotton, slub knit, garment dyed



266-Muted Clay



733-Myrtle



262-Italian Straw



648-Mountain Spring



625-Purple Impression



03-White



753-Ensign Blue

# FINLEY TANK TOP

WHOLESALE \$17.50 | SUGGESTED RETAIL \$35.00



**STYLE#: M24864**

## DESCRIPTION & FEATURES

- V-neck • Embroidered woven trim at neckline
- Wide bra friendly straps

## SIZE SCALE

XS	S	M	L	XL	XXL
----	---	---	---	----	-----

## PRODUCT CONTENT

100% organic cotton, slub knit, garment dyed



733-Myrtle



262-Italian Straw



03-White



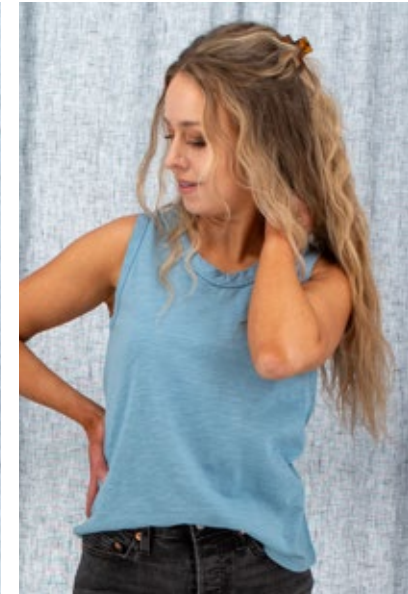
753-Ensign Blue



625-Purple Impression



266-Muted Clay



648-Mountain Spring

# LAUREL TOP

WHOLESALE \$24.50 | SUGGESTED RETAIL \$49.00



**STYLE#: M28564**

## DESCRIPTION & FEATURES

• V-neck with crochet tape detail • Eyelet yokes and sleeves • Shirring along yoke seams • 3 button kissing placket

## SIZE SCALE

XS	S	M	L	XL	XXL
----	---	---	---	----	-----

## PRODUCT CONTENT

100% organic cotton, slub knit, garment dyed + 100% cotton, woven eyelet



03-White



266-Muted Clay



733-Myrtle



262-Italian Straw



625-Purple Impression

# COTTONWOOD SHADE DRESS

WHOLESALE \$37.50 | SUGGESTED RETAIL \$75.00



**STYLE#: P908554**

## DESCRIPTION & FEATURES

• 38.5" length • Johnny collar • Hip pockets • Slight ruching on sleeve caps • Shirt tail hemline

## SIZE SCALE

XS	S	M	L	XL	XXL
----	---	---	---	----	-----

## PRODUCT CONTENT

76% TENCEL™ lyocell 24% cotton, chambray



962-Chambray



WHOLESALE \$22.50 | SUGGESTED RETAIL \$45.00

# MOSS ROSE TOP



129-Rapture Rose



945-Whitecap Grey



931-Niagara Mist

**STYLE#: M250398**

## DESCRIPTION & FEATURES

• Decorative grommet trim around neckline • 5 button henley • Short sleeves

## SIZE SCALE

XS	S	M	L	XL	XXL
----	---	---	---	----	-----

## PRODUCT CONTENT

100% organic cotton, waffle knit, reactive dye



795-Mountain View

# MOSS ROSE 3/4 SLEEVE

WHOLESALE \$24.50 | SUGGESTED RETAIL \$49.00



795-Mountain View

**STYLE#:** M261398

## DESCRIPTION & FEATURES

- Decorative grommet trim around neckline • 5 button henley • 3/4 length sleeves

## SIZE SCALE

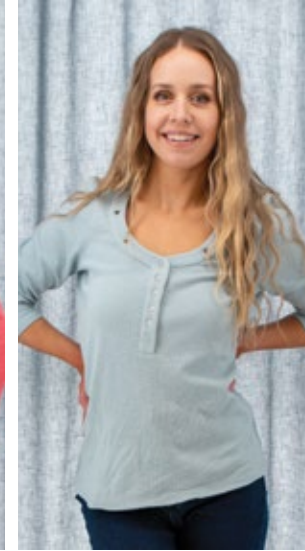
XS	S	M	L	XL	XXL
----	---	---	---	----	-----

## PRODUCT CONTENT

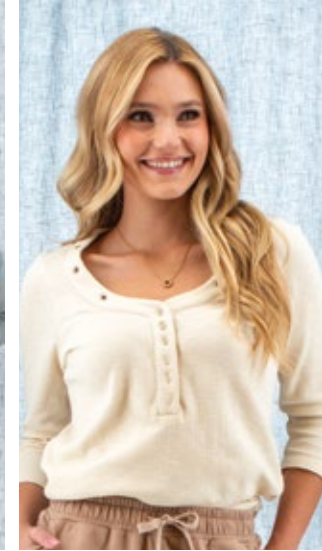
100% organic cotton, waffle knit, reactive dye



129-Rapture Rose



931-Niagara Mist



945-Whitecap Grey



WHOLESALE \$34.50 | SUGGESTED RETAIL \$69.00

# JAYLIN LONG SLEEVE



03-White



**STYLE#:** J314220

## DESCRIPTION & FEATURES

- New eyelet design for 2027 • Single chest pocket
- Full button front placket

## SIZE SCALE

XS	S	M	L	XL	XXL
----	---	---	---	----	-----

## PRODUCT CONTENT

100% cotton, woven eyelet



# CALYPSO TEE

WHOLESALE \$18.50 | SUGGESTED RETAIL \$37.00



03-White

**STYLE#: M279152**

## DESCRIPTION & FEATURES

- Scoop neck T-shirt • Solids & yarn-dyed stripes

## SIZE SCALE

XS	S	M	L	XL	XXL
----	---	---	---	----	-----

## PRODUCT CONTENT

45% recycled polyester 35% TENCEL™ lyocell 20% organic cotton, jersey knit



330-Strawberry Pink



448-Estate Blue



1160-Mushroom Stripe



WHOLESALE \$27.50 | SUGGESTED RETAIL \$55.00

# WILDFLOWER SKORT



IX49-Olive



IX51-Blue

**STYLE#: P40564**

## DESCRIPTION & FEATURES

- 16.5" length • Elastic waist pull-on skort
- Built-in short • Drop waist skirt • Bias cut below drop yoke

## SIZE SCALE

XS	S	M	L	XL	XXL
----	---	---	---	----	-----

## PRODUCT CONTENT

100% organic cotton, slub knit, all over print



# JAYLIN TANK TOP

WHOLESALE \$24.50 | SUGGESTED RETAIL \$49.00



**STYLE#: J313220**

## DESCRIPTION & FEATURES

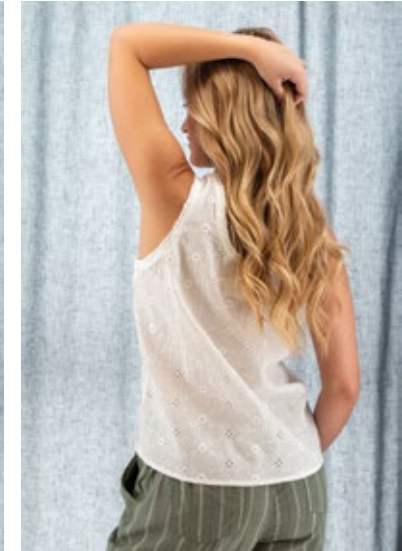
- Scoop neck • Wide bra friendly straps • Full button front placket • Slight ruffle along armholes & neck

## SIZE SCALE

XS	S	M	L	XL	XXL
----	---	---	---	----	-----

## PRODUCT CONTENT

100% cotton, woven eyelet



03-White



WHOLESALE \$24.50 | SUGGESTED RETAIL \$49.00

# CALYPSO WRAP



1160-Mushroom Stripe

**STYLE#: M271152**

## DESCRIPTION & FEATURES

- Open shawl collar • Closureless wrap • Back darts at waist for shaping • Subtle shirring on collar • Raglan sleeves

## SIZE SCALE

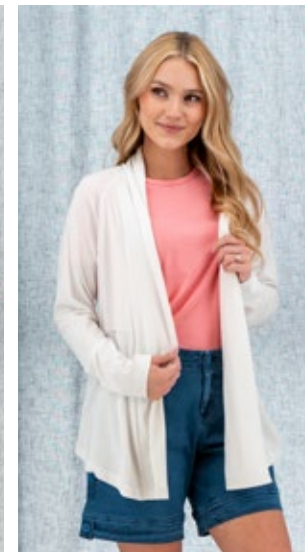
XS	S	M	L	XL	XXL
----	---	---	---	----	-----

## PRODUCT CONTENT

45% recycled polyester 35% TENCEL™ lyocell 20% organic cotton, jersey knit



330-Strawberry Pink



03-White



448-Estate Blue

# BLUE SKIES DRESS

WHOLESALE \$34.50 | SUGGESTED RETAIL \$69.00



**STYLE#: P893152**

## DESCRIPTION & FEATURES

- 42" length • V-neck • Wide bra friendly straps
- Elastic waist • Large shirt tail hemline • Hip pockets

## SIZE SCALE

XS	S	M	L	XL	XXL
----	---	---	---	----	-----

## PRODUCT CONTENT

45% recycled polyester 35% TENCEL™ lyocell 20% organic cotton, jersey knit, all over print



JC51-Blue



# MEET THE WOMEN OF SPRING/ SUMMER 2027

We hope that by sharing the height of the models and the size of clothing they are wearing, it will illuminate how products will fit and make your ordering easier. Don't hesitate to reach out to your sales rep or our customer service team for more specifics about fit.



ANNA TOP - HONEY MUSTARD PG. 6



PIPPIN TOP - POTTER'S CLAY PG. 6 | TARRA SHORT - ENSIGN BLUE PG. 17



**Demerey**

5'5" | Wears Size: 6/S



**Laura**

5'7" | Wears Size 6/S



**Gabby**

5'8" | Wears Size 4/S



**Riley**

5'4" | Wears Size: 2/XS



**Megan**

5'4" | Wears Size: 2/XS



**Shannon**

5'5" | Wears Size: 2/XS

## WOMEN'S SIZE CHART

SIZE	XS		S		M		L		XL	XXL
	0	2	4	6	8	10	12	14	16	18
<b>CHEST</b>	34½"	35½"	36½"	37½"	38"	40"	41½"	43"	44½"	47"
<b>WAIST</b>	26½"	27½"	28½"	29½"	31"	32"	33½"	35"	36½"	39"
<b>HIP</b>	37½"	38½"	39½"	40½"	42"	43"	44"	46"	47½"	50"



INOLA PULLOVER HENLEY - ITALIAN STRAW Pg. 12 | TARRA SHORT - WHITE Pg. 17












INOLA HOODIE - WHITE Pg. 13 | INOLA PANT - WHITE Pg. 12 | MAGNOLIA 3/4 SLEEVE - BLUE Pg. 15

# 2027 WOMEN'S PRODUCT INDEX


Woven		Wholesale Price	Suggested Retail	
	J28752 Anna Top	\$32.50	\$65.00	Pg. 6
	J33652 Clover Field Top	\$27.50	\$55.00	Pg. 22
	J31992 Honey Grove Tank	\$24.50	\$49.00	Pg. 10
	J32492 Honey Grove Top	\$29.50	\$59.00	Pg. 8
	J314220 Jaylin Long Sleeve	\$34.50	\$69.00	Pg. 30
	J313220 Jaylin Tank Top	\$24.50	\$49.00	Pg. 32






	J34652 Nadya Tank Top	\$24.50	\$49.00	Pg. 23
	J31952 Petal Creek Tank	\$24.50	\$49.00	Pg. 9
	J32452 Petal Creek Top	\$29.50	\$59.00	Pg. 8
	J30652 Pippin Top	\$29.50	\$59.00	Pg. 6
	J33952P Plumas Print Shirt	\$29.50	\$59.00	Pg. 24
	J33952 Plumas Shirt	\$29.50	\$59.00	Pg. 7

Knits		Wholesale Price	Suggested Retail	
	M25495 Basis Tee M25495P	\$18.50	\$37.00	Pg. 16
	M279152 Calypso Tee	\$18.50	\$37.00	Pg. 31
	M271152 Calypso Wrap	\$24.50	\$49.00	Pg. 32
	M19664 Este Top	\$19.50	\$39.00	Pg. 25






	M24864	Finley Tank Top	\$17.50	\$35.00	Pg. 27
	M232128	Inola Hoodie	\$37.50	\$75.00	Pg. 13
	M275128	Inola Pullover Henley	\$27.50	\$55.00	Pg. 12
	M233128 M233128P	Inola Sweatshirt	\$29.50	\$59.00	Pg. 11
	M28564	Laurel Top	\$24.50	\$49.00	Pg. 28
	M17464	Layla Short Sleeve Top	\$18.50	\$37.00	Pg. 26
	M23895 M23895P	Magnolia 3/4 Sleeve	\$19.50	\$39.00	Pg. 15
	M261398	Moss Rose 3/4 Sleeve	\$24.50	\$49.00	Pg. 30
	M250398	Moss Rose Top	\$22.50	\$45.00	Pg. 29

## Dresses

			Wholesale Price	Suggested Retail	
	P893152	Blue Skies Dress	\$34.50	\$69.00	Pg. 33

	P908554	Cottonwood Shade Dress	\$37.50	\$75.00	Pg. 29
	P86895	Daystar Dress	\$32.50	\$65.00	Pg. 17
	P88552	High Prairie Dress	\$37.50	\$75.00	Pg. 24
	P903128	Inola Dress	\$34.50	\$69.00	Pg. 14
	P89652	Wayfarer Dress	\$39.50	\$79.00	Pg. 18

## Bottoms

			Wholesale Price	Suggested Retail	
	L262128	Inola Pant	\$29.50	\$59.00	Pg. 12
	K159128	Inola Short	\$22.50	\$45.00	Pg. 10
	K153444	Tarra Short	\$32.50	\$65.00	Pg. 17
	L266444	Tarra Wide Leg Pant	\$39.50	\$79.00	Pg. 14
	P40564	Wildflower Skort	\$27.50	\$55.00	Pg. 31



PETAL CREEK TOP - LIGHT BLUE PG. 8 | TARRA WIDE LEG PANT - WHITE PG. 14



ESTE TOP - ITALIAN STRAW PG. 25 | TARRA WIDE LEG PANT - ENSIGN BLUE PG. 14

ORB  
• OLD RANCH BRANDS EST. 1965





LAM PRINT SHIRT - WHITE PG. 10 | PIPPIN TOP - POTTERS CLAY PG. 6



HAWKE SHIRT - BLUE PG. 6 | WESTON SHIRT - OLIVE PG. 15  
TARRA SHORT - BLUSH TAN PG. 17 | PLUMAS PRINT SHIRT - NATURAL PG. 24



CALYPSO WRAP - WHITE PG. 32 | MAYRER DRESS - DARK BLUE PG. 18



INOLA PULLOVER HENLEY - MOUNTAIN SPRING PG. 12 | INOLA SHORT - WHITE PG. 10

SPRAGUE SWEATSHIRT - FEATHER GREY PG. 16



# SUSTAINABLE CHOICES, GENUINE IMPACT

At Old Ranch Brands, our commitment to sustainability is as deep-rooted as our small-town values. We understand that true quality comes from making thoughtful choices, not just for ourselves but for our community and the world. That's why we've embraced sustainable fibers in our collections, choosing fabrics and materials that are kind to both you and the environment. Our dedication to these eco-friendly options ensures that every piece not only looks great but also stands the test of time.

## FAIR TRADE FOR A FAIR FUTURE

We believe in supporting fair and ethical practices, because caring for our community extends beyond our doorstep. That's why we work with partners who share our values, ensuring that the people behind our products are treated with respect and fairness. Our commitment to fair trade means that every garment you wear helps support better wages and working conditions, creating a positive impact on lives and communities.

From our family to yours, we're proud to offer clothing that reflects our values and makes a difference. With every piece, you're not just choosing style—you're choosing to support a brand that stands for integrity, sustainability, and genuine connection.



PLUMAS SHIRT - PINK PG. 7



CANYON RIDGE SHIRT - HOT SAUCE PG. 11 | ESTE TOP - ITALIAN STRAW PG. 25  
TARRA WIDE LEG PANT - ENSIGN BLUE PG. 14



### ORGANIC COTTON

Soft by nature, strong by design. Organic cotton is grown without synthetic pesticides or fertilizers and uses farming methods that promote soil health and conserve water. It's gentle on your skin and better for the planet—making it a true superhero fiber in sustainable fashion.



### RECYCLED POLYESTER

Performance with a lighter footprint. Made from post-consumer materials like plastic bottles, recycled polyester transforms waste into durable, quick-drying fabric. It reduces energy, water usage, and landfill waste—all without compromising on everyday performance.



### TENCEL™ LYOCCELL

Elegance meets eco-innovation. TENCEL™ Lyocell starts with wood pulp from responsibly managed forests and transforms it into a biodegradable, breathable fabric through a closed-loop process that recycles 99% of water and solvents. It's strong, silky-soft, and built to last.



Keep an eye out for the Fair Trade Certified™ seal throughout this season's book to easily identify ethically produced styles.



# FAMILY OWNED, FAMILY OPERATED

Spring brings with it a sense of renewal—and for us at Old Ranch Brands, that means returning to what matters most. Our Spring/Summer 2027 Women’s and Men’s collections are a tribute to porch-swing mornings, sun-dappled walks, and the enduring values that run through every small town in America.

## BUILT TO LAST

From the Sierra Nevada foothills, our family-owned company designs each piece with intention. We know what it means to live simply and live well. Our design team (often with one of the office dogs curled up at their feet) puts care and purpose into every garment, ensuring it’s made to last through this season and the next.

## STYLE THAT FEELS LIKE HOME

Soft, breathable, and ready for anything—this collection was made for the kind of summer that lingers. Whether you’re heading out on a weekend road trip or spending slow evenings under the stars, these pieces are made to move with you.

## THE LEGACY LIVES ON

Old Ranch isn’t just a name—it’s the road our family grew up on, and a reminder of where we came from. We’re proud to keep our family legacy going strong. This brand is more than a business—it’s a way of life. And we’re glad you’re here with us, one season at a time.



WAVFARER DRESS - ROSE PG. 18



LIAM SHIRT KI03 -WHITE PG. 15 | STONE CREEK TEE -CLOUD BLUE PG. 7  
PLUMAS SHIRT -WHITE PG. 7 | LAYLA TOP -MOUNTAIN SPRING PG. 26



PORTER PRINT SHIRT - OMERE BLUE PG. 5 | DRIFTWOOD TEE - SEA SPRAY PG. 18 | BLUE SKIES DRESS - BLUE PG. 33

# TERMS & CONDITIONS



All sales by Sportif Wholesale or Old Ranch Brands, referred to hereinafter as "Sportif", are exclusively governed by and subject to the Terms and Conditions contained herein. Requests which add to, vary from or conflict with these Terms & Conditions are expressly rejected and can only be made effective in a written document signed and dated by an officer of Sportif.

Orders are subject to credit approval by Sportif's Banking Factor. Standard Terms are N30 and effective from the date of invoice. Advance payment may be required in some cases. Preseason discounts are issued at the time of invoice. Discounts are extended to merchandise only and not to shipping and handling. We reserve the right to ship orders up to 30 days in advance of the requested ship date. Prices are subject to change without notice. We reserve the right to accept or reject any order.

## ORDER CANCELLATIONS/REVISIONS

Order cancellations or revisions equal to or more than 20% must be made through regional sales representative and may result in the loss of preseason terms and discount. All cancellations and revisions must be requested in writing.

CANCELLATIONS WILL NOT BE ACCEPTED AFTER 60 DAYS FROM ORDER SUBMISSION DATE.

## CLAIMS

Claims against shipments must be made in writing (via mail, fax or email) within 15 days from receipt of goods. Warranty returns will be repaired or replaced at Sportif's option.

## RETURNS

All returns, including defective merchandise, must be preauthorized by your account manager within 90 days. Unapproved returns will be refused at the Dealer's expense. Approved returns that are not defective or damaged must be received by Sportif in a condition conducive for resale. Returns may be subject to a 10% restocking fee.

## SHIPMENTS

Standard shipping will be F.O.B. Sportif Wholesale, Inc., UPS Ground Service, prepaid and invoiced. All other shipping methods or special shipping instructions need to be clearly stated on your purchase order.

## PAST DUE ACCOUNTS/COLLECTION

Past due accounts shall incur a service charge of 1.5% per month, or \$5.00, whichever is greater, for each outstanding invoice. Shipments will be withheld from accounts with past due invoices and/or other charges. Accounts that are more than 60 days past due may be turned over to a collection agency. Buyer agrees to pay the full cost and expense, including attorney's fees incurred by Sportif Wholesale, Inc. for the collection of past due accounts.

## EMPLOYEE PURCHASES/VIP PROGRAM

We offer discounts to full-time store employees. Please contact your sales rep or our customer service for details and authorization of our on-line Sales Associate Pro-Deal.



DRAKE LONG SLEEVE - BLUE SKIES PG. 9 | DAYSTAR DRESS - DARK BLUE PG. 17

*Old Ranch*

[www.olderanchb2b.com](http://www.olderanchb2b.com) • 800-776-7843